



**FURON®**  
Pure Performance

# Furon® PV Series Pump

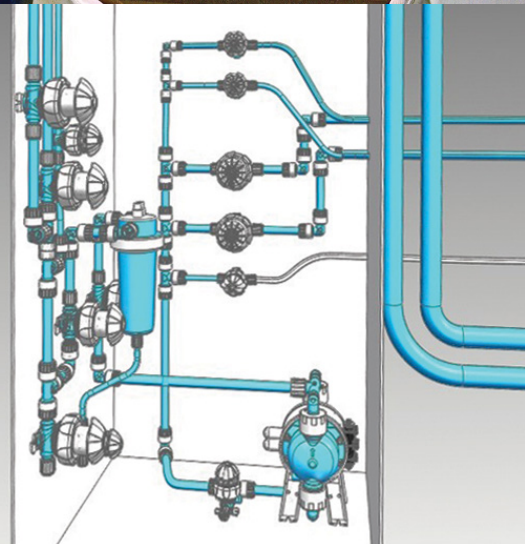
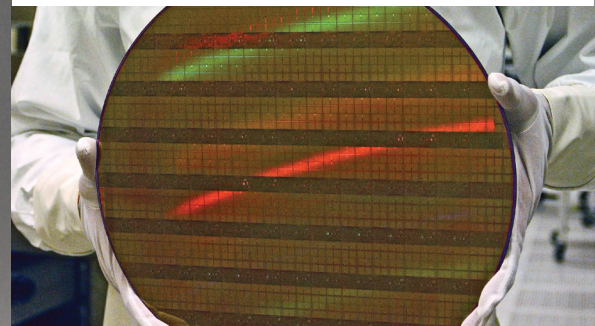
## Air Operated, Fluoropolymer Bellows Pump

(30 lpm/8 gpm; 60 lpm/16 gpm)

Furon PV Series Pumps are designed to handle a great variety of chemistry and are constructed with no metal parts. All wetted parts are manufactured from PFA and PTFE suitable for pumping even most aggressive chemicals. The premium self-priming capability of our product coupled with our plug & play driving system provide an easy installation & set up. Our innovative shuttle valve fixation technology allows us to provide three different driving systems to adapt our pump to exact customer requirements.

### Applications

Furon PV Series bellows pumps offer the perfect solution for photovoltaic, chemical processing and drain applications in the semiconductor industry, or any industry where chemical resistance and maximum uptime is a must.



### Features and Benefits

- Metal free pump
- O-Ring free flow path concept (tongue & groove concept)
- Self priming
- Fiber optic stroke sensor & leak detection system
- Low pulsation level with the use of Furon A2 Dampener technology
- Flexible driving system
  - Single shuttle
  - External driving
  - Anti-stalling through twin shuttle system
- Flexible connection system compatible with all fitting types
- ATEX compliant: II 3 G/c IIC TX X

ASK AN ENGINEER

  
**SAINT-GOBAIN**

## Furon PV Series Pump Specifications

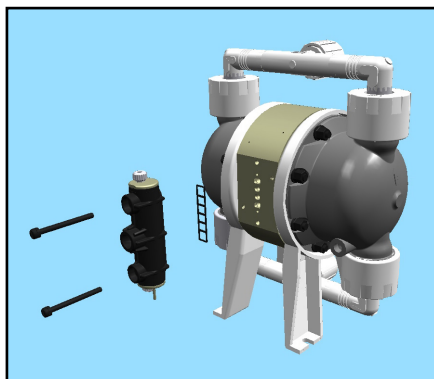
Pump Size	Maximum Flow Rate		Maximum Suction Head		Maximum Air Pressure*		Maximum Back Pressure		Maximum Air Consumption*		Media Temperature Range**		Weight	
	gpm	lpm	ft	m	psi	bar	psi	bar	SCFM	m³/h	°F	°C	lbs	kg
2	8	30	12	3.5	87	6	80	5.5	6	9	30 - 212°F	0 - 100°C	9	4.5
3	16	60	14	4					9	14			16	8

\* [Please contact us](#) for use with higher pressure

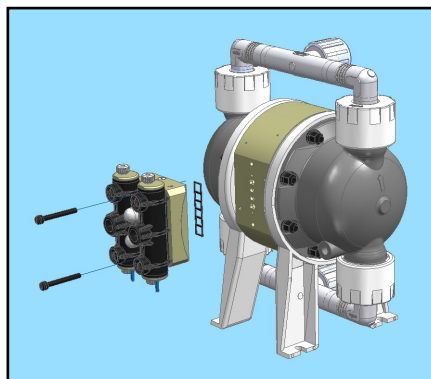
\*\* [Please contact us](#) for use with higher temperature

Max. Ambient Temperature: 140°F (60°C)

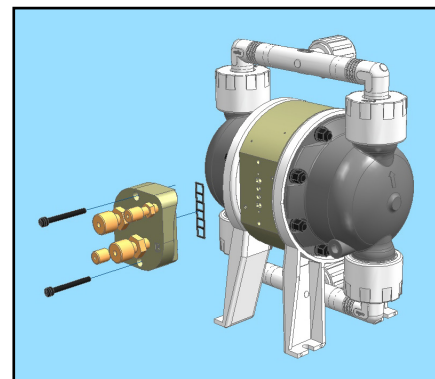
Tested for more than 130 million cycles



Single shuttle valve driving system



Twin shuttle valve driving system  
(anti stalling system)



External driving  
(allow a direct driving through a PLC system)

## Ordering Information

Base Part Number	Pump Size	End Connection Type	End Connection Size		Driving System		
			in	mm	Single Standard Driving Shuttle Valve	TWIN Shuttle Valve Driving System	External Driving
A2PV2 F12	2	FlareGrip® II	3/4	19.05	Nothing to add to the base Part Number	Add TWIN at the end of the base Part Number	Add EXT at the end of the base Part Number
A2PV2 T12		Tube End					
A2PV3 F16	3	FlareGrip® II	1	25.4			
A2PV3 T16		Tube End					

## Options

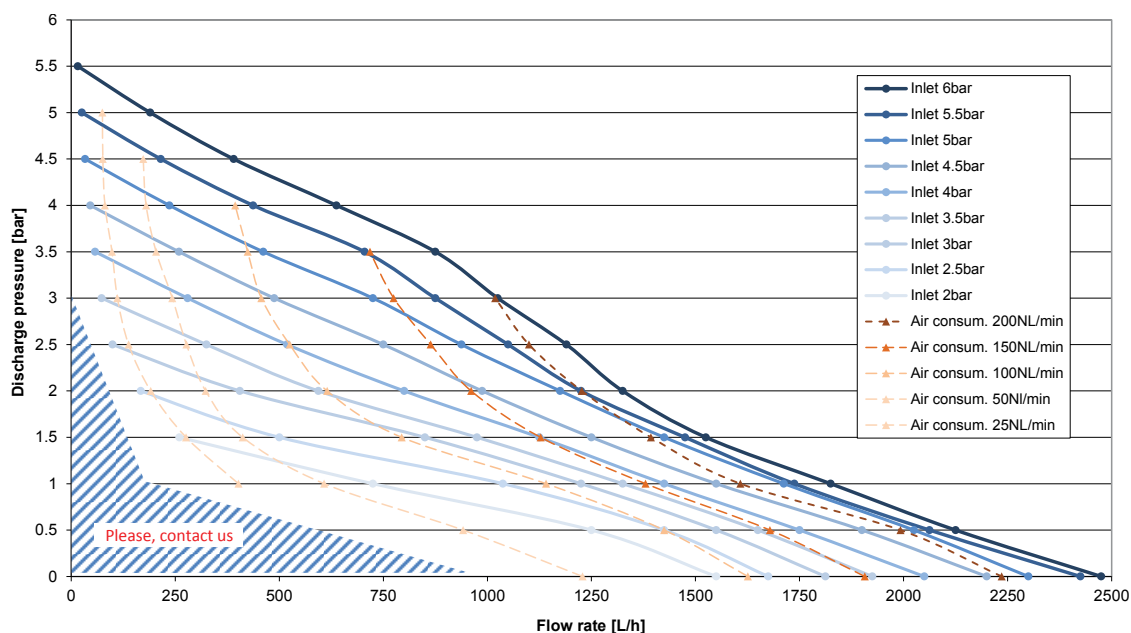
- Optic fiber for stroke counting (16.4 ft (5 m) standard)
  - PN = 9475
- Fiber optic converter
  - PN = 8319
- Metal free leak detection system
  - LD1 for size 2 pump
  - LD2 for size 3 pump
- Other manifold orientations than the standard horizontal/horizontal
- Various combinations of end connections available (Flare, tube, pipe, NPT connections).

[Please consult our engineers](#) for details.

## Flow Rate Curves

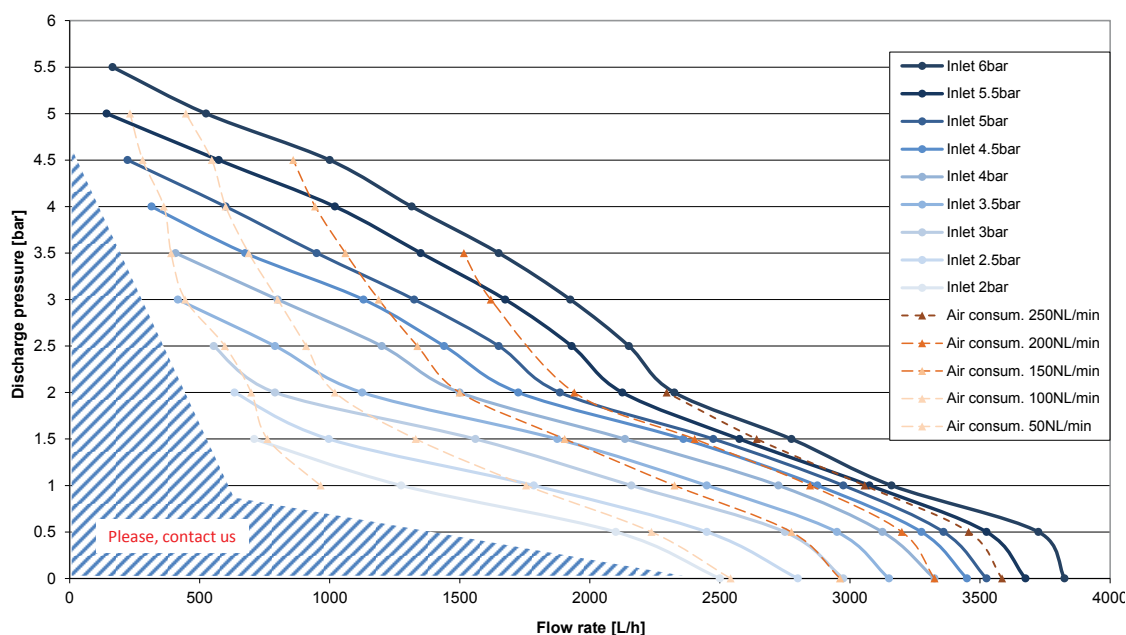
### Pump Size 2

Inlet air pressure (bar) and air consumption (NL/min) as a function of fluid flow rate (L/h) and discharge pressure (bar)  
Pump Size 2, Ø6x8 air pressure tube



### Pump Size 3

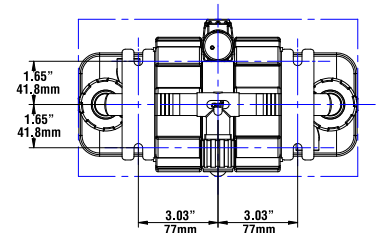
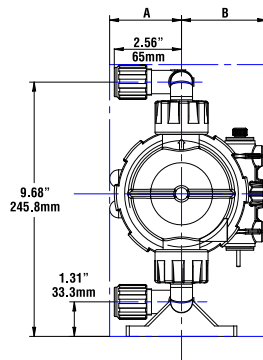
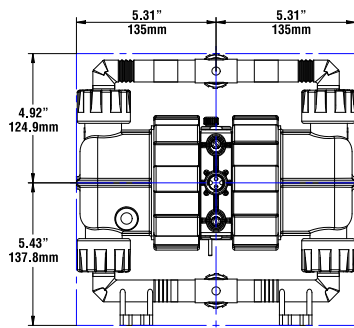
Inlet air pressure (bar) and air consumption (NL/min) as a function of fluid flow rate (L/h) and discharge pressure (bar)  
Pump Size 3, Ø8x10 air pressure tube



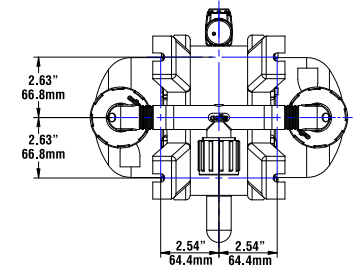
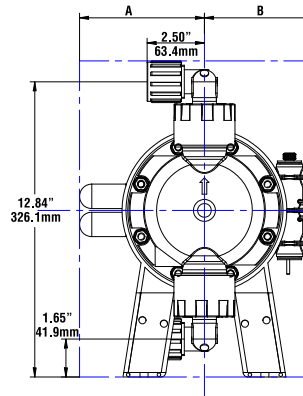
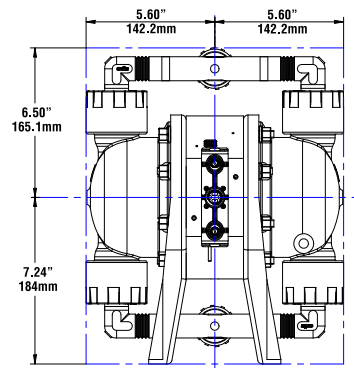
## Dimensions

	Pump Size 2				Pump Size 3			
	Control Side		Muffler Side		Control Side		Muffler Side	
	A		B		A		B	
	in	mm	in	mm	in	mm	in	mm
Single Shuttle	3.25	82.5			4.72	120		
Twin Shuttle	5.16	131			5.84	148		
External Shuttle	5.21	132						
Muffler Only			2.74	69.5			5.43	138
Muffler & Leak Detection System			3.72	95.5			6.50	165

Pump Size 2



Pump Size 3



### Saint-Gobain Performance Plastics

**China** (+8621) 5472 1568  
Sales.PPLCN@saint-gobain.com  
**Europe** (+33) 3 85 20 27 00  
quotes-clm@saint-gobain.com  
**India** (+91) 80 46978888  
pplindia.hc@saint-gobain.com

**Japan** (+81) 3 6256 9703  
ls-japan@saint-gobain.com  
**Korea** (+82) 2 6098 0180  
LS-Korea@saint-gobain.com  
**Southeast Asia** (+66) 38 667 800  
cs.sgplsea@saint-gobain.com

**Taiwan** (+886) 2 2503 4201  
Taiwan.ppl@saint-gobain.com  
**United States** (+1) 800-833-5661  
gardengrovequoteteam@saint-gobain.com  
**All Other Regions**  
www.furon.com

**NOTE:** This document is intended to provide information about the product to enable you to consider whether generally the Product meets your application need and is not intended to provide product specification. This document should not be considered a Product warranty or guaranty. To the extent this document mentions any tests done by Saint-Gobain, such tests are done under controlled laboratory circumstances and hence other factors in your use and application may impact such values. Saint-Gobain strongly recommends that you conduct practical tests simulating the conditions of your application to ensure that the product meets your requirements for your specific application.

Furon® and FlareGrip® are registered trademarks of Saint-Gobain Performance Plastics.

**WARRANTY:** Saint-Gobain warrants that the Product will meet specifications at the time of delivery and honor such warranty claims for a period of 18 after delivery, based on configuration. In the event that you are a distributor purchasing Saint-Gobain Product, any change to specification while in your control as a result of storage conditions or otherwise may cause the above warranty to be voided. THIS IS THE EXCLUSIVE WARRANTY AND IS EXPRESSLY IN LIEU OF ANY AND ALL OTHER OBLIGATIONS, GUARANTEES, WARRANTIES AND REPRESENTATIONS. SAINT-GOBAIN DISCLAIMS ALL IMPLIED WARRANTIES OF MERCHANTABILITY AND FITNESS FOR A PARTICULAR PURPOSE.