



Longer lasting,  
Simple design.



# STOPCOCK VALVES

## 2-Way 1/4-turn



Our 2-way PFA HP AstiPure® stopcock valves have been designed to meet the stringent requirements of chemicals used in the semiconductor process.

Sizes range from 1/4" to 1/2" and are offered in flare connections, making them ideal for quick installation.

1/4-turn manual actuator allows quick and easy operation from closed to open position and a straight through flow path.

Bi-directional pressure capability.

Available in 2 and 3 port connections and panel mount versions.

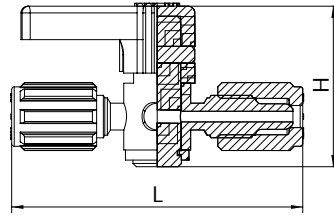
Customized products available upon request.

### FEATURES/BENEFITS

- Wetted parts made from molded virgin ultrapure PFA HP and PTFE.
  - Ultrapure construction.
- 100% plastic construction: no metal or elastomers.
  - Prevents safety hazards and the possibility of contaminating your fluids.
- No wearing parts.
  - High reliability and maintenance free.
- Straight through flow path.
  - Minimizes the flow restriction.

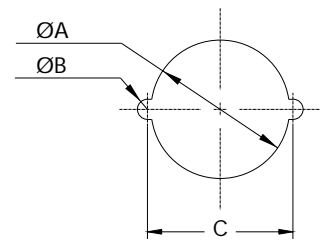
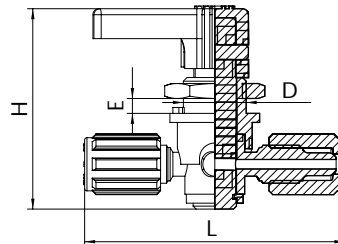
These valves combine well with our large orifice fittings, superior surface tubing and pumps. We lower your Cost of Ownership.

## V21MF 2-Way Stopcock 1/4 Turn PFA HP Valve



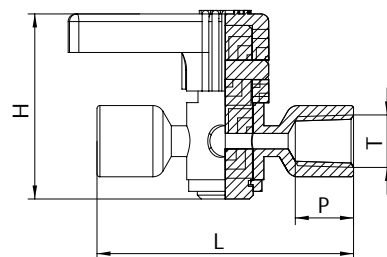
Part Number	Flare Connection		Orifice ID mm	H mm	L mm
	mm	Inch			
V21 04 06	4 x 6	5/32 x 1/4	4	48	67
V21 06 08	6 x 8	1/4 x 5/16	4	48	82
V21 08 10	8 x 10	5/16 x 3/8	8	67	91
V21 10 13	10 x 13	3/8 x 1/2	8	67	117
V21 MF4	3.8 x 6.4	5/32 x 1/4	3.2	48	89
V21 MF6	6.4 x 9.5	1/4 x 3/8	4	48	95
V21 BMF6	6.4 x 9.5	1/4 x 3/8	6.4	67	104
V21 MF8	9.5 x 12.7	3/8 x 1/2	8	67	110

## V21MFC 2-Way Stopcock 1/4 Turn Panel Mounted PFA HP Valve



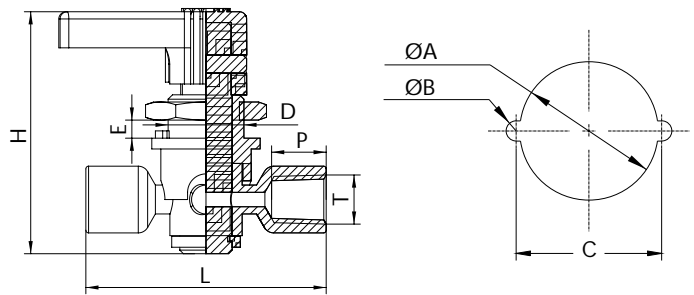
Part Number	Flare Connection		Orifice ID mm	A mm	B mm	C mm	D mm	E mm	H mm	L mm
	mm	Inch								
V21 04 06C	4 x 6	5/32 x 1/4	4	22	5	21	21	5	67	67
V21 06 08C	6 x 8	1/4 x 5/16	4	22	5	21	21	5	67	82
V21 08 10C	8 x 10	5/16 x 3/8	8	34	5	33	33	5	87	91
V21 10 13C	10 x 13	3/8 x 1/2	8	34	5	33	33	5	87	117
V21 MF4C	3.8 x 6.4	5/32 x 1/4	3.2	22	5	21	21	5	67	89
V21 MF6C	6.4 x 9.5	1/4 x 3/8	4	22	5	21	21	5	67	95
V21 BMF6C	6.4 x 9.5	1/4 x 3/8	6.4	34	5	33	33	5	87	104
V21 MF8C	9.5 x 12.7	3/8 x 1/2	8	34	5	33	33	5	87	110

## V21F 2-Way Stopcock 1/4 Turn Female Threaded PFA HP Valve



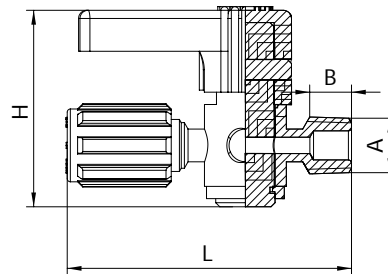
Part Number	Orifice ID mm	H mm	L mm	T NPT	P mm
V21 F4	4	48	67	1/4	15
V21 F6	8	67	79	3/8	15

## V21FC 2-Way Stopcock 1/4 Turn Female Threaded & Panel Mounted PFA HP Valve



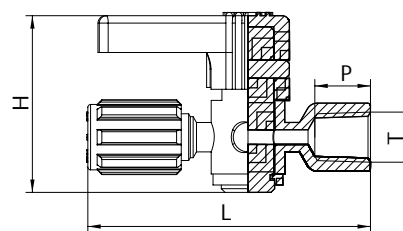
Part Number	Orifice ID mm	A mm	B mm	C mm	D mm	E mm	H mm	L mm	T NPT	P mm
V21 F4C	4	22	5	21	21	5	48	67	1/4	15
V21 F6C	8	34	5	33	33	5	67	79	3/8	15

## V21MFM 2-Way Stopcock 1/4 Turn Male Threaded PFA HP Valve



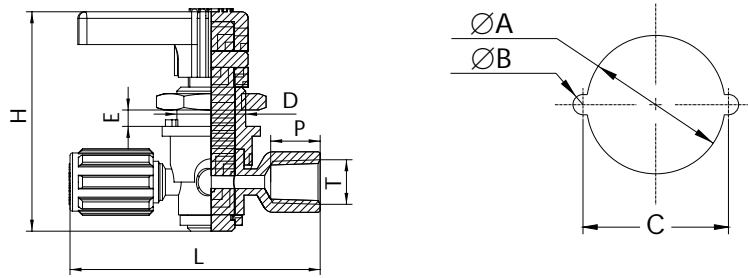
Part Number	Flare Connection		A NPT	B mm	H mm	L mm
	mm	Inch				
V21 04M13	4 x 6	5/32 x 1/4	1/4	13	48	62
V21 06M13	6 x 8	1/4 x 5/16	1/4	13	48	69
V21 08M21	8 x 10	5/16 x 3/8	1/2	15	67	82
V21 10M21	10 x 13	3/8 x 1/2	1/2	20	67	95
V21 MF4M4	3.8 x 6.4	5/32 x 1/4	1/4	10	48	71
V21 MF6M6	6.4 x 9.5	1/4 x 3/8	3/8	10	48	75
V21 BMF6M6	6.4 x 9.5	1/4 x 3/8	3/8	10	67	85
V21 BMF8M6	9.5 x 12.7	3/8 x 1/2	3/8	10	67	88
V21 BMF8M8	9.5 x 12.7	3/8 x 1/2	1/2	13.5	48	90

## V21MFF 2-Way Stopcock 1/4 Turn Flare & Female Threaded PFA HP Valve



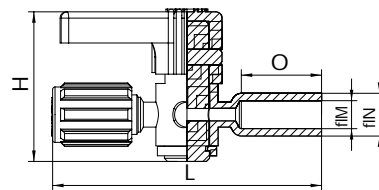
Part Number	Orifice ID mm	H mm	L mm	T NPT	P mm
V21 MF4F4	3.2	48	78	1/4	15
V21 MF6F6	6.4	67	92	3/8	15

## V21MFFC 2-Way Stopcock 1/4 Turn Flare & Female Threaded & Panel Mounted PFA HP Valve



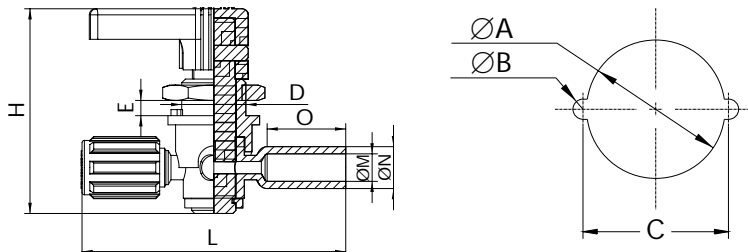
Part Number	Orifice ID mm	A mm	B mm	C mm	D mm	E mm	H mm	L mm	T NPT	P mm
V21 MF4F4C	3.2	22	5	21	21	5	67	78	1/4	15
V21 MF6F6C	6.4	34	5	33	33	5	87	92	3/8	15

## V21MFT 2-Way Stopcock 1/4 Turn Flare & Fuse Bond PFA HP Valve



Part Number	Orifice ID mm	H mm	L mm	ØM mm	ØN mm	O mm
V21 MF4T4	4	48	88	9	13.7	25
V21 MF8T8	8	67	103	15.4	21.3	25

## V21MFTC 2-Way Stopcock 1/4 Turn Flare & Fuse Bond & Panel Mounted PFA HP Valve



Part Number	Orifice ID mm	A mm	B mm	C mm	D mm	E mm	H mm	L mm	ØM mm	ØN mm	O mm
V21 MF4T4C	4	22	5	21	21	5	67	88	9	13.7	25
V21 MF8T8C	8	34	5	33	33	5	87	103	15.4	21.3	25

AstiPure® is a registered trademark of Saint-Gobain Performance Plastics Asti. Specifications are subject to change without notice.

**FRANCE**  
 Saint-Gobain Performance Plastics Asti  
 41 boulevard des Bouvets  
 F-92741 NANTERRE Cedex - France  
 Phone: 33 / (0) 1 55 68 59 59  
 Fax: 33 / (0) 1 55 68 59 68

**USA**  
 Saint-Gobain Performance Plastics  
 7301 Orangewood Avenue  
 GARDEN GROVE, CA 92841  
 Phone: 1 / (714) 630 5818  
 Fax: 1 / (714) 688 2614

**JAPAN**  
 Saint-Gobain Performance Plastics  
 3-7 Kojimachi, Chiyoda-ku  
 TOKYO 102-0083  
 Phone: 81 / (0) 3 3263 0285  
 Fax: 81 / (0) 3 3263 0286

  
**SAINT-GOBAIN**  
**PERFORMANCE PLASTICS**



12-month Limited Warranty: For a period of 12 months from the date of first sale, Saint-Gobain Performance Plastics Asti warrants this product to be free from defects in manufacturing. This company's only obligation will be to provide replacement product for any material proven to have such a defect, or at Saint-Gobain Performance Plastics Asti's option, to refund the purchase price thereof. User assumes all other risks if any, including the risk of injury loss or damage, whether direct, consequential or incidental, arising out of the use, misuse, or inability to use this product. SAINT-GOBAIN PERFORMANCE PLASTICS ASTI DISCLAIMS ALL IMPLIED WARRANTIES OF MERCHANTABILITY AND FITNESS FOR A PARTICULAR PURPOSE.

Saint-Gobain Performance Plastics Asti does not assume any responsibility or liability for any advice furnished by it, or for the performance or results of any installation or use of the product or of any final product into which the product may be incorporated by the purchaser and/or user.